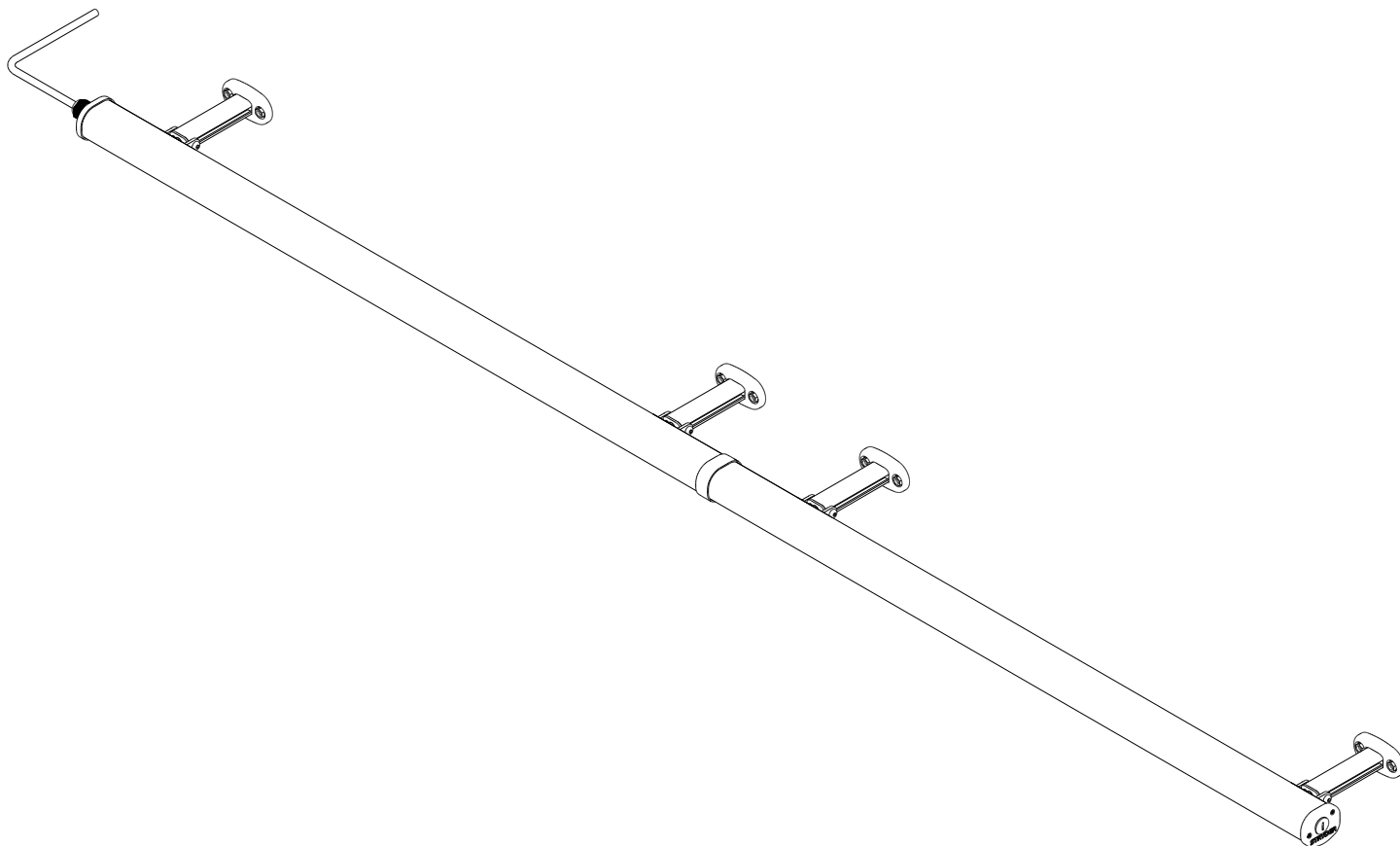
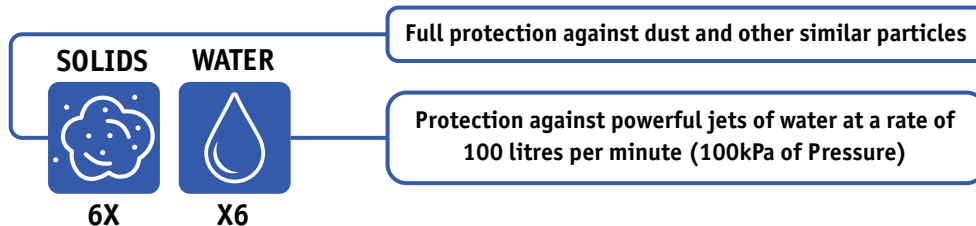


Self Build Sign System



Stryder is IP66 Certified



Technical Specification & Price list

EXTRUDED ALUMINIUM SIGNAGE SYSTEM

www.ashbytrade.net
+44 (0) 118 981 5343

TROUGHLIGHT SYSTEM

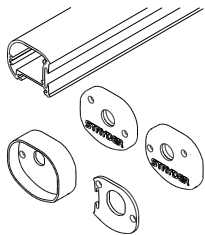
The Stryder Troughlight system comprises our custom extrusion, brackets and caps and is available in lengths of up to 6000mm in a single section or almost any length above 6000mm in multiple sections.

The system's range of fixings can be customised to meet any length or angle requirement, and is available with adjustable brackets to fix to walls, channel, trays and panels (both single sided and back to back). LEDs and Optical Lens enables a bright and clear illumination of the chosen subject and Stryder comes as standard with LED tape, neoprene seals and gaskets, which gives our product a IP66 rating.

All components are available on a same working day despatch.

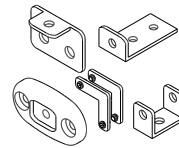
As an alternative to a Self Build Sign System, these units can be supplied fully assembled but partially finished, powder coated to one of 107 stock RAL colours or fully finished complete with your graphics applied.

Ashby Trade Sign Supplies is a manufacturer, designer and distributor of signage systems. Open longer for our customers' convenience, our products can be purchased either as components, partly finished or fully finished systems.



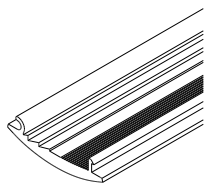
TROUGHLIGHT EXTRUSION

Stryder's slimline extrusion is produced in either 5000mm or 6000mm lengths and is available from stock in mill finish, RAL 9016 white, RAL 9005 black and silver anodised.



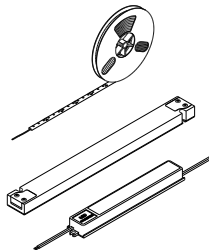
TROUGHLIGHT BRACKETS

Stryder features a comprehensive range of brackets that can be customised to suit any mounting location or style including: wall, tray, channel, panel, double sided, variable and at 30°, 60° or 90°. Troughlight 'arms' can be cut to any length to enable surfaces of up to 3050mm (Optimum Light) to be lit without any light fade and all are available from stock in mill finish, RAL 9016 white, RAL 9005 black and MW151 Silver aluminium.



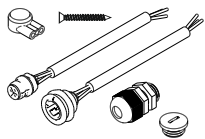
OPTICAL LENS

Stryder's lens is CAD generated using optically designed software to give maximum consistent light potential. This polycarbonate extrusion is available in lengths of up to 6000mm and is designed to maximise the output of the 24 volt LED strip.



WHITE LED STRIP & POWER SUPPLIES

Stryder utilises a single strip of 24v LED tape to give upto a 1330 Lumen/metre output with a option of Cool or Warm LED. An appropriate power supply supplied which depends on Trough light length.



FIXINGS

A comprehensive list of all non-specific system components that are used throughout the range.

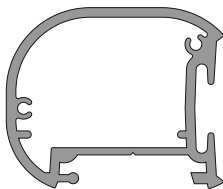
All Items sold are subject to the Standard Trading Terms of **Ashby Trade Sign Supplies Ltd.**
Copy on request or viewable at www.ashbytrade.net

EXTRUDED ALUMINIUM SIGNAGE SYSTEM

www.ashbytrade.net
+44 (0) 118 981 5343

Paint References
White is RAL 9016 (Traffic White)
Anodised match
MW151 Silver (Silver)





Stryder Troughlight Extrusion
STLCM*.0 / STLCB*.0 / STLCW*.0 / STLCEA*.0

PRODUCT	CODE	MATERIAL	FINISH	LENGTH
Stryder Troughlight Extrusion 5m Dimensions: 45mm x 38mm	STLCM5.0	ALUMINIUM 6063T6	Mill Finish	5m
	STLCB5.0		Black	
	STLCW5.0		White	
	STLCEA5.0		Anodised	
Stryder Troughlight Extrusion 6m Dimensions: 45mm x 38mm	STLCM6.0	ALUMINIUM 6063T6	Mill Finish	6m
	STLCB6.0		Black	
	STLCW6.0		White	
	STLCEA6.0		Anodised	

Troughlight Cap Screw
ACS4x9.5S / ACS4x9.5B
Page 14

Left Stryder Troughlight Cast End Cap
STLCBECLM / STLCBECLB / STLCBECLW / STLCBECLA
Cast aluminium cap with Left gasket.
Requires End Cap Gaskets to makes the troughlight IP66 rated.

Troughlight Wall Bracket
STLCBWM / STLCBWB / STLCBWW / STLCBWA
Page 5

Large Cable Gland (Black/Grey)
EACGLB/EACGLG
You can screw into the left or right cap depending on which side you require the cap to exit.
Page 14

Stryder Troughlight Extrusion
STLCM*.0 / STLCB*.0 / STLCW*.0 / STLCEA*.0
Cut the troughlight extrusion to the required length.

Blanking Plug (Black/Grey)
EACBPB/EACBPG
You can screw this into the left or right cap depending on which side needs to be blocked off exiting (No cable exit)
Page 14

Stryder Troughlight Polycarbonate Lens Extrusion
STLCAL
Page 10

Lens Extrusion Foam Gasket Cord
STLCRI
The 3.5mm Foam Cord runs the full length of the groove on both sides of the lens.
Page 13

Left Stryder Troughlight Cast End Cap
STLCBECLM / STLCBECLB / STLCBECLW / STLCBECLA

Right Stryder Troughlight Cast End Cap
STLCBECRM / STLCBECRB / STLCBECRW / STLCBECRA

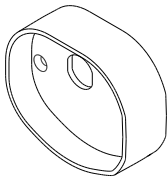
PRODUCT	CODE	MATERIAL	FINISH
Left Stryder Troughlight End Cap Dimensions: 54mm x 46mm x 8mm	STLCBECLM	CAST ALUMINIUM LM6	Mill Finish
	STLCBECLB		Black
	STLCBECLW		White
	STLCBECLA		MW151 Silver
Right Stryder Troughlight End Cap Dimensions: 54mm x 46mm x 8mm	STLCBECRM	CAST ALUMINIUM LM6	Mill Finish
	STLCBECRB		Black
	STLCBECRW		White
	STLCBECRA		MW151 Silver
Requires:	Stryder Caps Sponge Gaskets (Pair) STLCRG (Page 13) Troughlight Cap Screws ACS4x9.5S / ACS4x9.5B (Page 14)		
Note:	Due to the Stryder Cap being Cast these can't be anodised, so we have them powder coated to the nearest match MW151 Silver		

EXTRUDED ALUMINIUM SIGNAGE SYSTEM

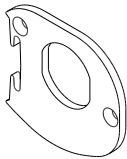
www.ashbytrade.net
+44 (0) 118 981 5343

Tools required to cut the troughlight extrusion to the size required and to fit troughlight cast caps(Metal) to extrusion



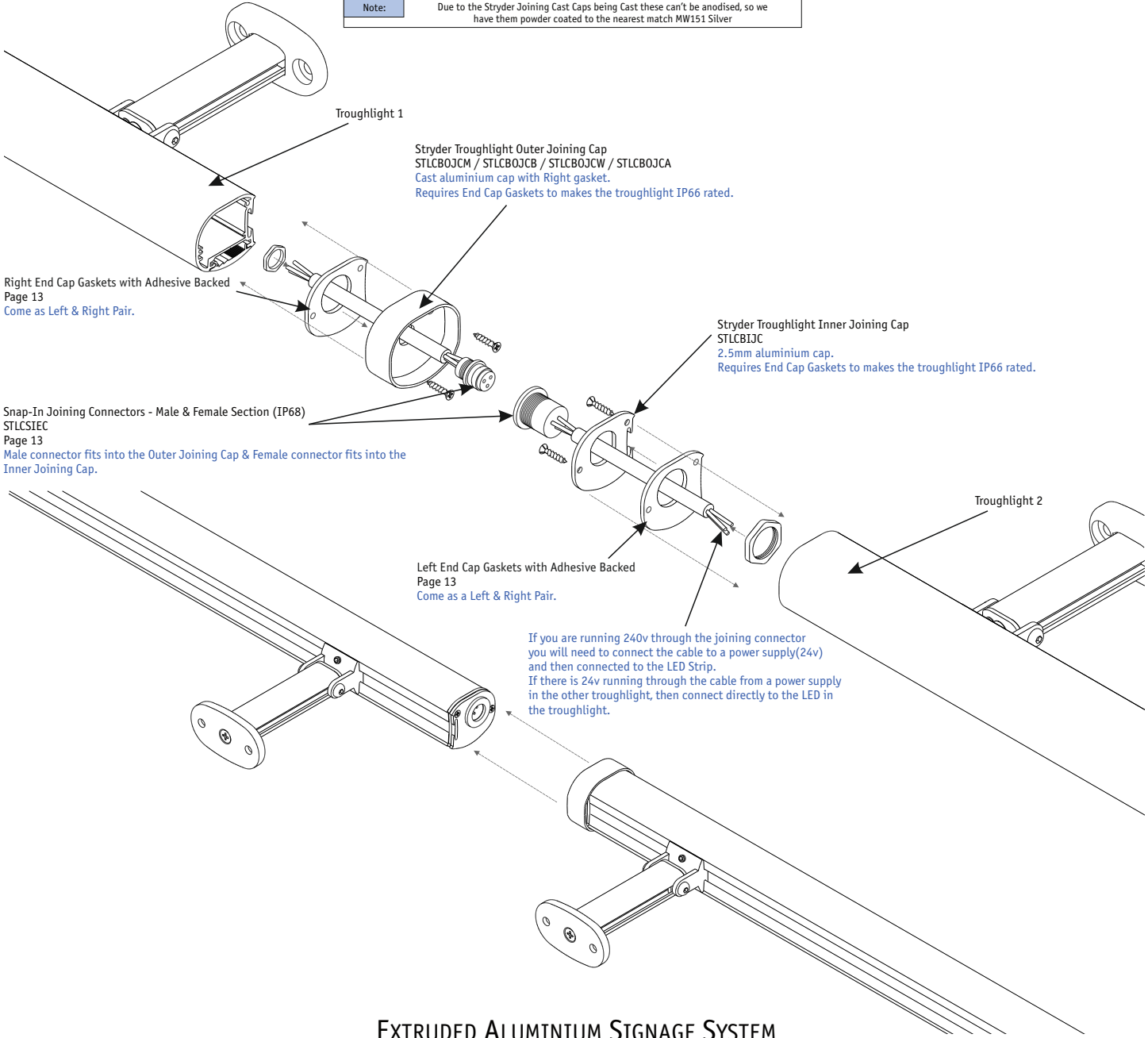


Stryder Outer Joining Cast Cap
STLCB0JCM / STLCB0JCB / STLCB0JCW / STLCB0JCA



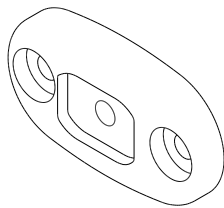
Stryder Inner Joining Cast Cap
STLCBIJC

PRODUCT	CODE	MATERIAL	FINISH
Stryder Outer Joining Cap Dimensions: 54mm x 45mm x 25mm	STLCB0JCM	CAST ALUMINIUM LM6	Mill Finish
	STLCB0JCB		Black
	STLCB0JCW		White
	STLCB0JCA		MW151 Silver
Stryder Inner Joining Cap Dimensions: 45mm x 42mm x 2.5mm	STLCBIJC	1050A ALUMINIUM	Mill Finish
Requires:	Stryder Caps Sponge Gaskets (Pair) STLCRG (Page 13) Troughlight Cap Screws ACS4x9.5S / ACS4x9.5B (Page 14)		
Note:	Due to the Stryder Joining Cast Caps being Cast these can't be anodised, so we have them powder coated to the nearest match MW151 Silver		



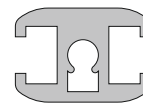
EXTRUDED ALUMINIUM SIGNAGE SYSTEM





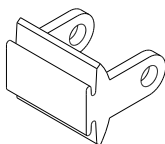
Troughlight Wall Bracket
STLCBWM / STLCBWB / STLCBWW / STLCBWA

PRODUCT	CODE	MATERIAL	FINISH
Troughlight Wall Bracket Dimensions: 71mm x 40mm x 10mm	STLCBWM	CAST ALUMINIUM LM6	Mill Finish
	STLCBWB		Black
	STLCBWW		White
	STLCBWA		MW151 Silver
Requires:	5.5x25mm Counter Sunk Screw ACS5.5x25 (Page 14)		
Note:	Due to the Stryder Cap being Cast these can't be anodised, so we have them powder coated to the nearest match MW151 Silver		



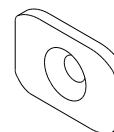
Troughlight Arm Extrusion
STLCBEM3.0 / STLCBEB3.0 / STLCBEW3.0 / STLCBEA3.0

PRODUCT	CODE	MATERIAL	FINISH	LENGTH
Troughlight Arm Extrusion Dimensions: 26mm x 18mm	STLCBEM3.0	ALUMINIUM 6063T6	Mill Finish	3m
	STLCBEB3.0		Black	
	STLCBEW3.0		White	
	STLCBEA3.0		Anodised	
Requires:	M6 Square Nut M6NUTS (Page 14)			



Troughlight Slider Bracket
STLCBSM / STLCBSB / STLCBSW / STLCBSA

PRODUCT		CODE	MATERIAL	FINISH
Troughlight Slider Bracket Dimensions: 34mm x 30mm x 34mm		STLCBSM	CAST ALUMINIUM LM6	Mill Finish
		STLCBSB		Black
		STLCBSW		White
		STLCBSA		MW151 Silver
Requires:	M6 12mm Dome Head Bolt M6DOME12 (Page 14) / M6 Washer (Ext Tooth) M6WASHEXT M6 8mm Grub Screw GSM0608			
Note:	Due to the Stryder Cap being Cast these can't be anodised, so we have them powder coated to the nearest match MW151 Silver			



Troughlight Projecting Arm End Cap
STLCBPECM / STLCBPECB / STLCBPECW / STLCBPECA

PRODUCT	CODE	MATERIAL	FINISH
Troughlight Projecting Arm End Cap Dimensions: 26mm x 18mm x 3mm	STLCBPECM	1050A ALUMINIUM	Mill Finish
	STLCBPECB		Black
	STLCBPECW		White
	STLCBPECA		MW151 Silver
Requires:	5.5x25mm Counter Sunk Screw ACS5.5x25 (Page 14)		
Note:	Projecting Arm End caps are powder coated to the nearest match MW151 Silver to match Wall Brackets and Sliders on the Anodised Troughlights option		

Troughlight Arm Extrusion
STLCBEM3.0 / STLCBEB3.0 / STLCBEW3.0 / STLCBEA3.0
The troughlight arm extrusion can be cut to the required length. An arm length vs. depth of panel guide can be found on the back page of this brochure.

5.5x25mm Counter Sunk Screw
ACS5.5x25
Page 14

M6 12mm Dome Head Bolt
M6DOME12
Page 14

Troughlight Projecting Arm End Cap
STLCBPECM / STLCBPECB / STLCBPECW / STLCBPECA

Troughlight Wall Bracket
STLCBWM / STLCBWB / STLCBWW / STLCBWA

M6 Washer (External Tooth)
M6WASHEXT
Page 14

M6 Square Nut
M6NUTS
Page 14

Troughlight Slider Bracket
STLCBSM / STLCBSB / STLCBSW / STLCBSA
You will require a bracket every 1000mm to support the troughlight extrusion.

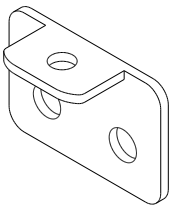
Wall Bracket Part Requirements (Per Bracket)
1x Troughlight Arm Extrusion (STLCBEM3.0)
1x Troughlight Projecting Arm End Cap (STLCBPECM)
2x M6 Square Nut (M6NUTS)
2x M6 12mm Dome Head Bolt (M6DOME12)
2x M6 Washer External Tooth (M6WASHEXT)
1x Troughlight Slider Bracket (STLCBSM)
1x Troughlight Wall Bracket (STLCBWM)
2x 5.5x25mm Countersunk Screw (ACS5.5x25)

EXTRUDED ALUMINIUM SIGNAGE SYSTEM

www.ashbytrade.net
+44 (0) 118 981 5343

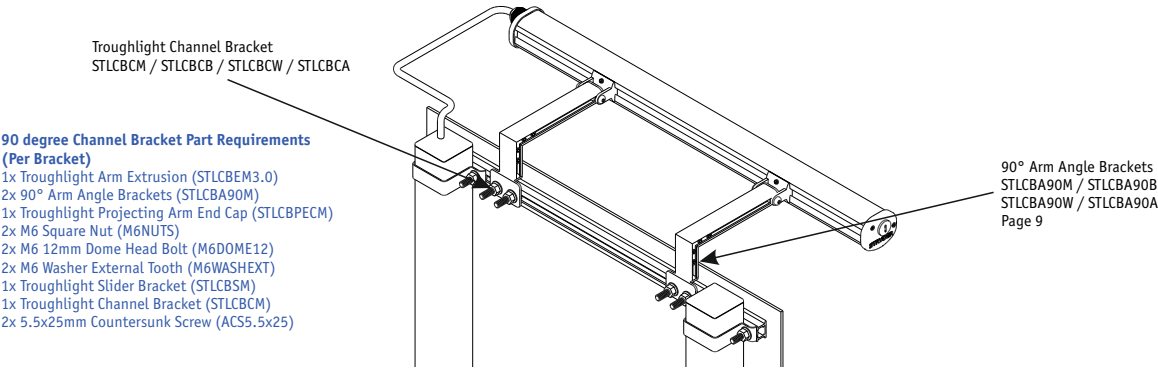
Tools required to cut troughlight arm extrusion and fit troughlight bracket sections together





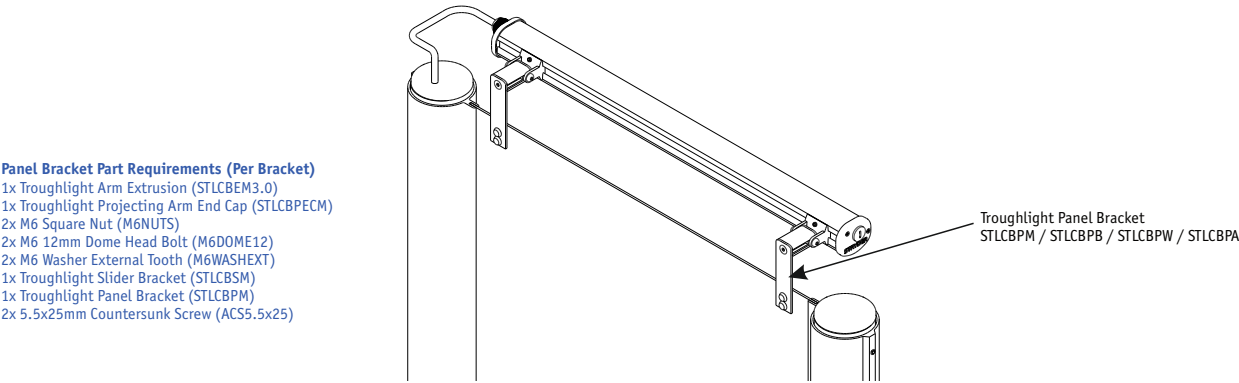
Troughlight Channel Bracket
STLCBCM / STLCBCB / STLCBCW / STLCBCA

PRODUCT		CODE	MATERIAL	FINISH
Troughlight Channel Bracket Dimensions: 50mm x 34mm x 21mm		STLCBCM	1050A ALUMINIUM	Mill
		STLCBCB		Black
		STLCBCW		White
		STLCBCA		MW151 Silver
Requires:	5.5x25mm Counter Sunk Screw ACS5.5x25 (Page 14)			

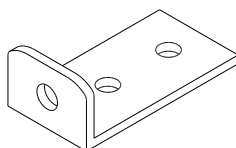


Troughlight Panel Bracket
STLCBPM / STLCBPB / STLCBPW / STLCBPA

PRODUCT	CODE	MATERIAL	FINISH
Troughlight Panel Bracket Dimensions: 26mm x 100mm x 5mm	STLCBPM	1050A ALUMINIUM	Mill
	STLCBPB		Black
	STLCBPW		White
	STLCBPA		MW151 Silver
Requires:	5.5x25mm Counter Sunk Screw ACS5.5x25 (Page 14)		



EXTRUDED ALUMINIUM SIGNAGE SYSTEM

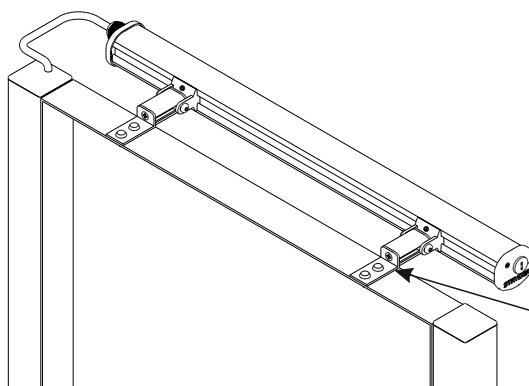


Troughlight Tray Bracket
STLCBTM / STLCBTB / STLCBTW / STLCBTA

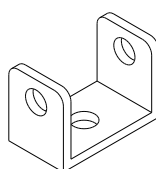
PRODUCT	CODE	MATERIAL	FINISH
Troughlight Tray Bracket Dimensions: 26mm x 20mm x 50mm	STLCBTM	1050A ALUMINIUM	Mill
	STLCBTB		Black
	STLCBTW		White
	STLCBTA		MW151 Silver
Requires:	5.5x25mm Counter Sunk Screw ACS5.5x25 (Page 14)		

Tray Bracket Part Requirements (Per Bracket)

- 1x Troughlight Arm Extrusion (STLCBEM3.0)
- 1x Troughlight Projecting Arm End Cap (STLCBPECM)
- 2x M6 Square Nut (M6NUTS)
- 2x M6 12mm Dome Head Bolt (M6DOME12)
- 2xM6 Washer External Tooth (M6WASHEXT)
- 1x Troughlight Slider Bracket (STLCBISM)
- 1x Troughlight Tray Bracket (STLCBTM)
- 2x 5.5x25mm Countersunk Screw (ACS5.5x25)



Troughlight Tray Bracket
STLCBTM / STLCBTB
STLCBTW / STLCBTA

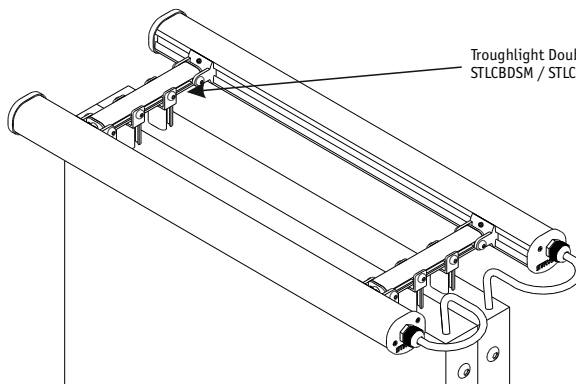


Troughlight Double Sided Bracket
STLCBDSM / STLCBDSB / STLCBDSW / STLCBDISA

PRODUCT	CODE	MATERIAL	FINISH
Troughlight Double Sided Bracket Dimensions: 30mm x 22mm x 18mm	STLCBDSM	1050A ALUMINIUM	Mill
	STLCBDSB		Black
	STLCBDSW		White
	STLCBDISA		MW151 Silver
Requires:	5.5x25mm Counter Sunk Screw ACS5.5x25 2xM6 12mm Dome Head Bolt M6DOME12 / 2xM6 Washer (External Tooth) M6WASHEXT (Page 14)		

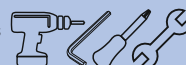
Double Sided Bracket Part Requirements (Per Bracket)

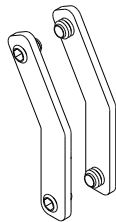
- 1x Troughlight Arm Extrusion (STLCBEM3.0)
- 2x Troughlight Projecting Arm End Cap (STLCBPECM)
- 8x M6 Square Nut (M6NUTS)
- 8x M6 12mm Dome Head Bolt (M6DOME12)
- 4x M6 Washer External Tooth (M6WASHEXT)
- 2x Troughlight Slider Bracket (STLCBISM)
- 2x Troughlight Double Sided Bracket (STLCBDSM)
- 4x 5.5x25mm Countersunk Screw (ACS5.5x25)



Troughlight Double Sided Bracket
STLCBDSM / STLCBDSB / STLCBDSW / STLCBDISA

EXTRUDED ALUMINIUM SIGNAGE SYSTEM



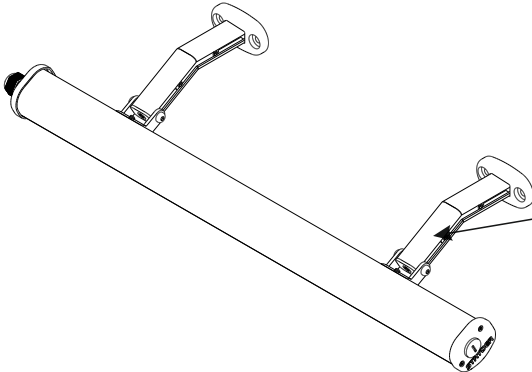


Comes Complete with
4x M6 8mm Grub Screw
GSM0608 (Page 14)

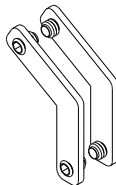
30° Arm Angle Brackets
STLCBA30M / STLCBA30B / STLCBA30W / STLCBA30A

PRODUCT	CODE	MATERIAL	FINISH
30° Arm Angle brackets Dimensions: 24mm x 60mm x 3mm	STLCBA30M	1050A ALUMINIUM	Mill
	STLCBA30B		Black
	STLCBA30W		White
	STLCBA30A		MW151 Silver
Requires:	Troughlight Arm Extrusion STLCBEM3.0 / STLCBEB3.0 / STLCBEW3.0 / STLCBEA3.0 (Page 5)		

- 30 degree Wall Bracket Part Requirements
(Per Bracket)**
- 1x Troughlight Arm Extrusion (STLCBEM3.0)
 - 2x 30° Arm Angle Brackets (STLCBA30M)
 - 1x Troughlight Projecting Arm End Cap (STLCBPECM)
 - 2x M6 Square Nut (M6NUTS)
 - 2x M6 12mm Dome Head Bolt (M6DOME12)
 - 2x M6 Washer External Tooth (M6WASHEXT)
 - 1x Troughlight Slider Bracket (STLCBSM)
 - 1x Troughlight Wall Bracket (STLCBWM)
 - 2x 5.5x25mm Countersunk Screw (ACS5.5x25)



30° Arm Angle Brackets
STLCBA30M / STLCBA30B
STLCBA30W / STLCBA30A

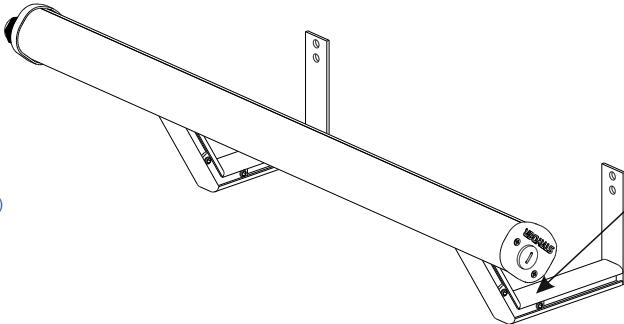


Comes Complete with
4x M6 8mm Grub Screw
GSM0608 (Page 14)

60° Arm Angle Brackets
STLCBA60M / STLCBA60B / STLCBA60W / STLCBA60A

PRODUCT	CODE	MATERIAL	FINISH
60° Arm Angle brackets Dimensions: 33mm x 50mm x 3mm	STLCBA60M	1050A ALUMINIUM	Mill
	STLCBA60B		Black
	STLCBA60W		White
	STLCBA60A		MW151 Silver
Requires:	Troughlight Arm Extrusion STLCBEM3.0 / STLCBEB3.0 / STLCBEW3.0 / STLCBEA3.0 (Page 5)		

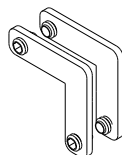
- 60 degree Panel Bracket Part Requirements
(Per Bracket)**
- 1x Troughlight Arm Extrusion (STLCBEM3.0)
 - 2x 60° Arm Angle Brackets (STLCBA60M)
 - 1x Troughlight Projecting Arm End Cap (STLCBPECM)
 - 2x M6 Square Nut (M6NUTS)
 - 2x M6 12mm Dome Head Bolt (M6DOME12)
 - 2x M6 Washer External Tooth (M6WASHEXT)
 - 1x Troughlight Slider Bracket (STLCBSM)
 - 1x Troughlight Panel Bracket (STLCBPM)
 - 2x 5.5x25mm Countersunk Screw (ACS5.5x25)



60° Arm Angle Brackets
STLCBA60M / STLCBA60B
STLCBA60W / STLCBA60A

EXTRUDED ALUMINIUM SIGNAGE SYSTEM





Comes Complete with
4x M6 8mm Grub Screw
GSM0608 (Page 14)

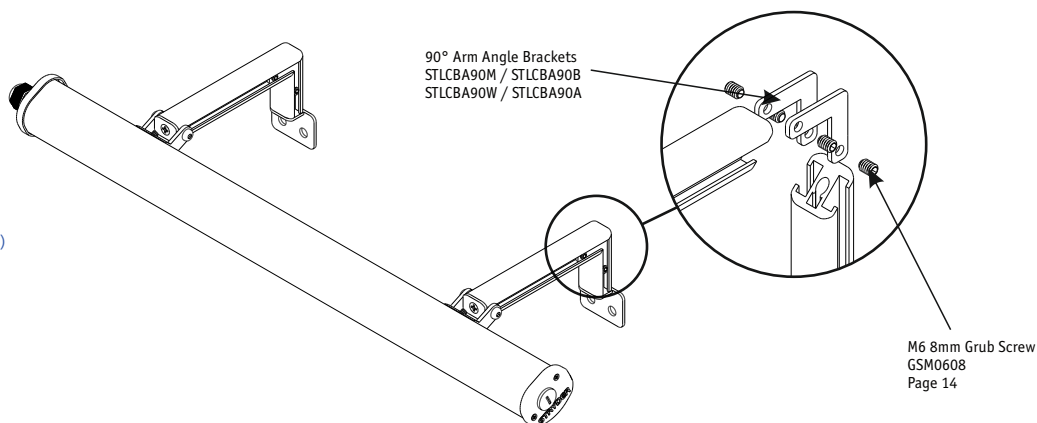


90° Arm Angle Brackets
STLCBA90M / STLCBA90B / STLCBA90W / STLCBA90A

PRODUCT		CODE	MATERIAL	FINISH
90° Arm Angle brackets Dimensions: 36mm x 36mm x 3mm		STLCBA90M	1050A ALUMINIUM	Mill
		STLCBA90B		Black
		STLCBA90W		White
		STLCBA90A		MW151 Silver
Requires:	Troughlight Arm Extrusion STLCBEM3.0 / STLCBEB3.0 / STLCBEW3.0 / STLCBEA3.0 (Page 5)			

90 degree Channel Bracket Part Requirements (Per Bracket)

- 1x Troughlight Arm Extrusion (STLCBEM3.0)
- 2x 90° Arm Angle Brackets (STLCBA90M)
- 1x Troughlight Projecting Arm End Cap (STLCBPECM)
- 2x M6 Square Nut (M6NUTS)
- 2x M6 12mm Dome Head Bolt (M6DOME12)
- 2x M6 Washer External Tooth (M6WASHEXT)
- 1x Troughlight Slider Bracket (STLCBSM)
- 1x Troughlight Channel Bracket (STLCBCM)
- 2x 5.5x25mm Countersunk Screw (ACS5.5x25)



Comes Complete with
4x M6 Square Nut
M6NUTS
4x M6 12mm Dome Head Bolt
M6DOME12
4x M6 Washer (External Tooth)
M6WASHEXT (Page 14)



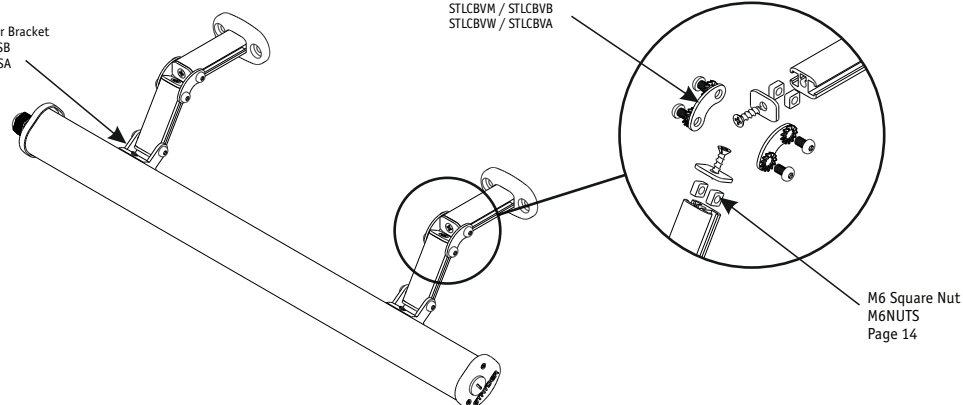
Variable Arm Angle Brackets
STLCBVM / STLCBVB / STLCBVW / STLCBVA

PRODUCT		CODE	MATERIAL	FINISH
Variable Arm Angle brackets Dimensions: 39mm x 19mm x 3mm		STLCBVM	1050A ALUMINIUM	Mill
		STLCBVB		Black
		STLCBVW		White
		STLCBVA		MW151 Silver
Requires:	Troughlight Arm Extrusion STLCBEM3.0 / STLCBEB3.0 / STLCBEW3.0 / STLCBEA3.0 (Page 5)			

Variable degree Wall Bracket Part Requirements (Per Bracket)

- 1x Troughlight Arm Extrusion (STLCBEM3.0)
- 2x Variable Arm Angle Brackets (STLCBVM)
- 3x Troughlight Projecting Arm End Cap (STLCBPECM)
- 6x M6 Square Nut (M6NUTS)
- 6x M6 12mm Dome Head Bolt (M6DOME12)
- 6x M6 Washer External Tooth (M6WASHEXT)
- 1x Troughlight Slider Bracket (STLCBSM)
- 1x Troughlight Wall Bracket (STLCBWM)
- 4x 5.5x25mm Countersunk Screw (ACS5.5x25)

Troughlight Slider Bracket
STLCBSM / STLCBSB
STLCBSW / STLCBSA
Page 5

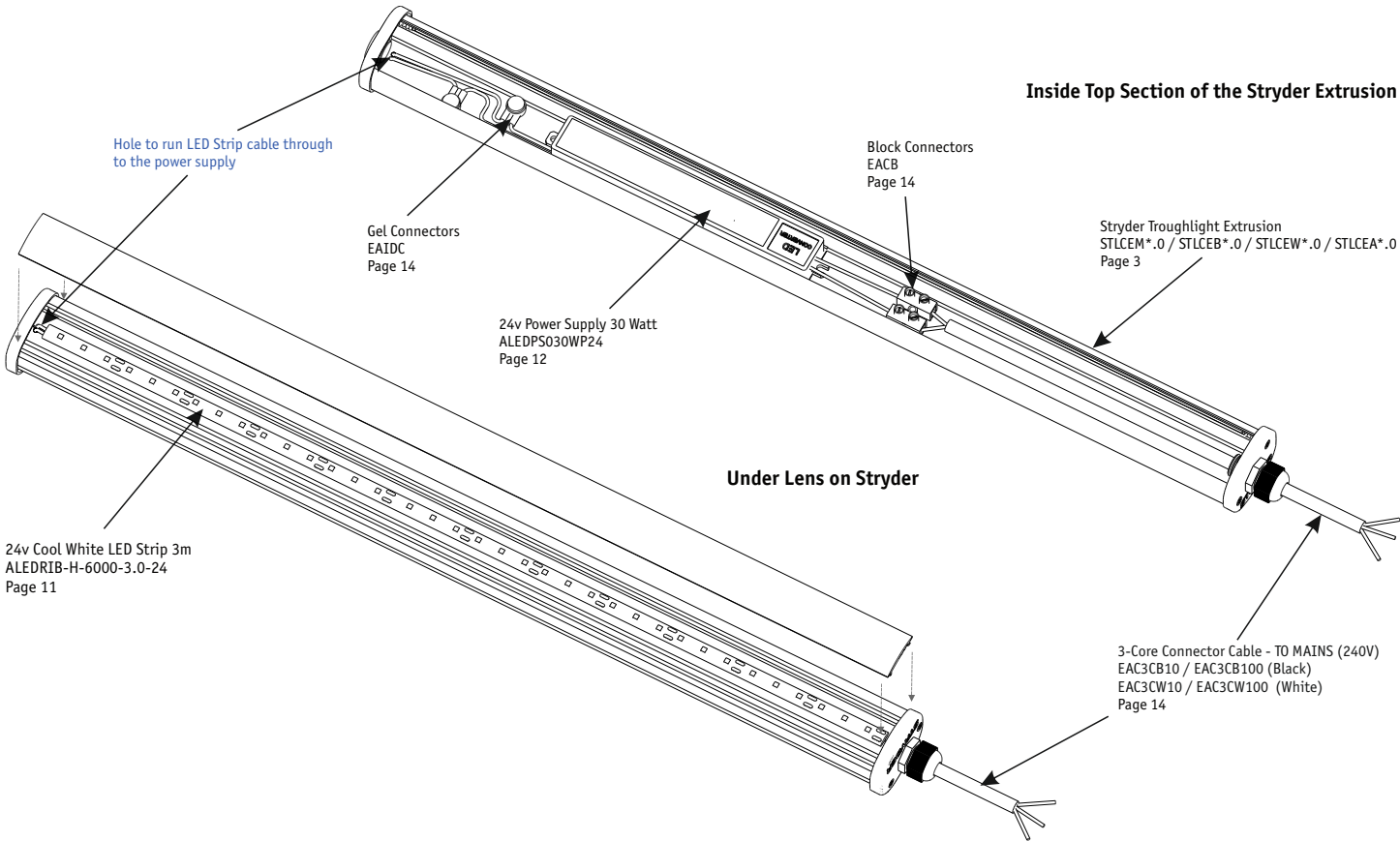
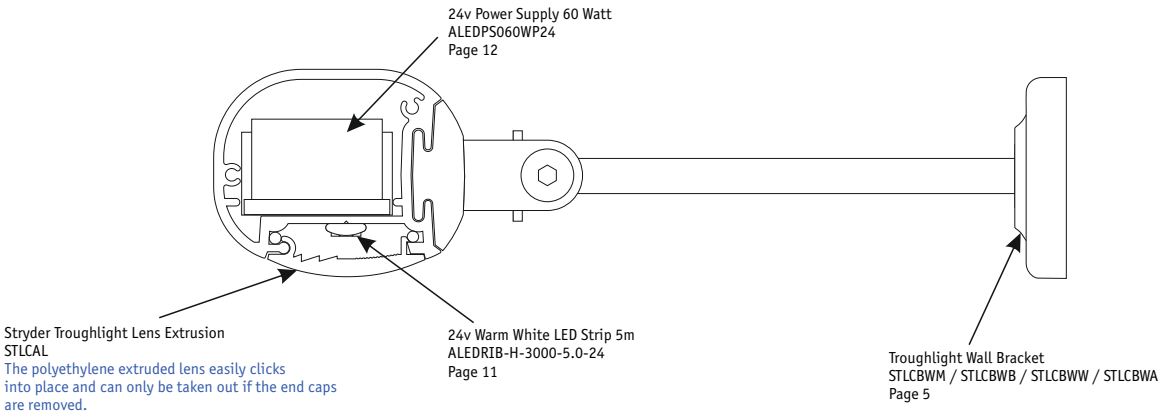


EXTRUDED ALUMINIUM SIGNAGE SYSTEM



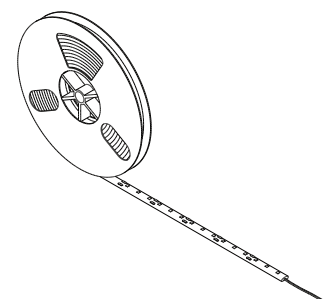
Stryder Troughlight Acrylic Lens Extrusion
STLCAL

PRODUCT	CODE	MATERIAL	THICKNESS	WIDTH	LENGTH
Stryder Troughlight Lens Extrusion Dimensions: 31mm x 8mm	STLCAL	POLYCARBONATE	4mm	31mm	6m
Requires:	Lens Extrusion Foam Gasket Cord STLCRI (Page 13)				

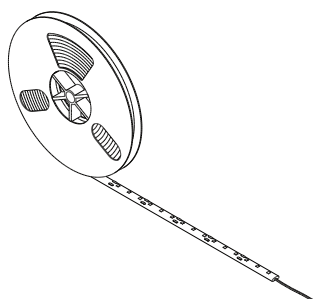


EXTRUDED ALUMINIUM SIGNAGE SYSTEM

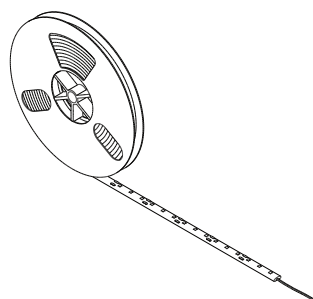




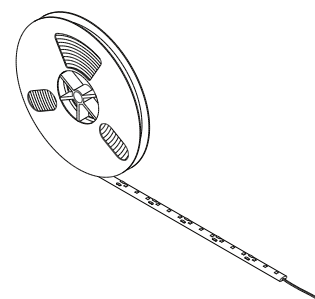
24v Cool White Flexible LED Strip 1.2m (6000K)
ALEDRIB-H-6000-1.2-24
Lumen Output: 1330lm (per metre)



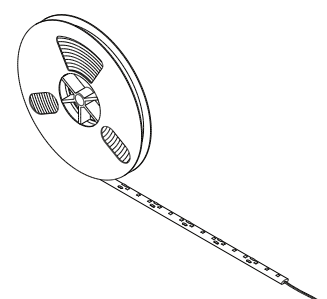
24v Cool White Flexible LED Strip 3m (6000K)
ALEDRIB-H-6000-3.0-24
Lumen Output: 1330lm (per metre)



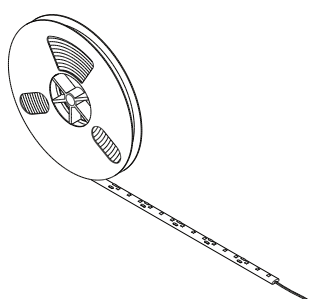
24v Cool White Flexible LED Strip 4m (6000K)
ALEDRIB-H-6000-4.0-24
Lumen Output: 1330lm (per metre)



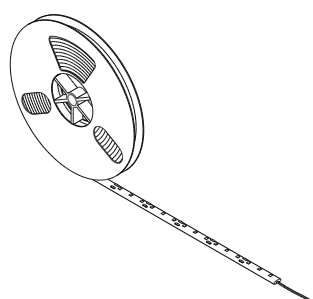
24v Cool White Flexible LED Strip 5m (6000K)
ALEDRIB-H-6000-5.0-24
Lumen Output: 1330lm (per metre)



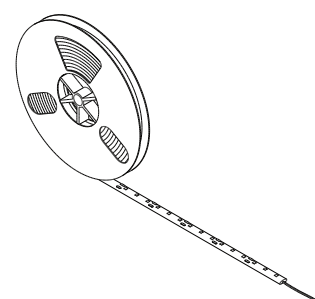
24v Warm White Flexible LED Strip 1.2m (3000K)
ALEDRIB-H-3000-1.2-24
Lumen Output: 1260lm (per metre)



24v Warm White Flexible LED Strip 3m (3000K)
ALEDRIB-H-3000-3.0-24
Lumen Output: 1260lm (per metre)

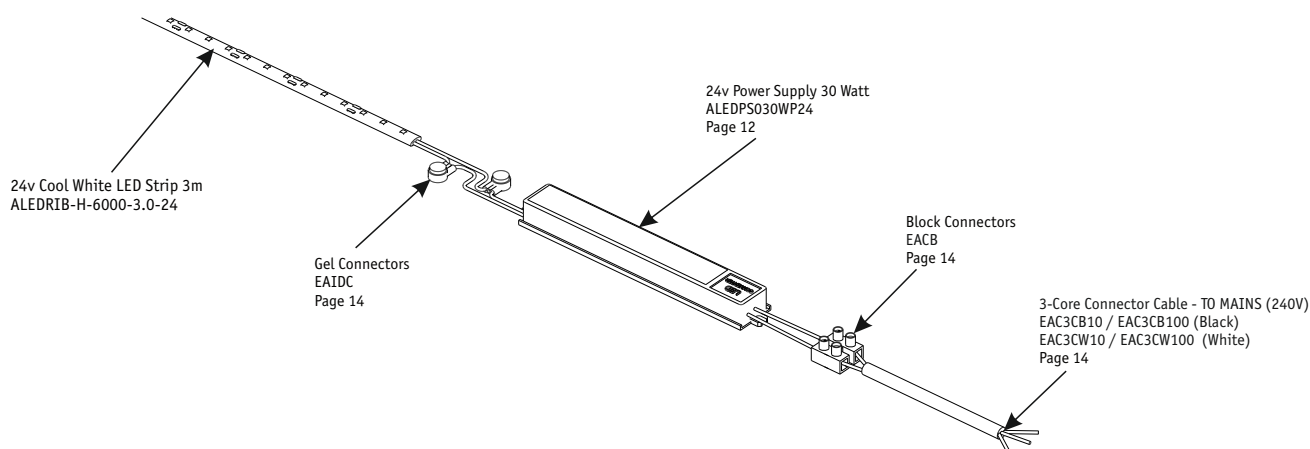


24v Warm White Flexible LED Strip 4m (3000K)
ALEDRIB-H-3000-4.0-24
Lumen Output: 1260lm (per metre)



24v Warm White Flexible LED Strip 5m (3000K)
ALEDRIB-H-3000-5.0-24
Lumen Output: 1260lm (per metre)

PRODUCT	LENGTH	COLOUR	COLOUR TONE	LUMEN OUTPUT	CODE	WATTS (per metre)	WATTS (per strip)
24v Cool White LED Strip 1.2m (IP65) Dimensions: 8mm x 1200mm	1200mm	Cool White	6000K	1330lm/m	ALEDRIB-H-6000-1.2-24	9.6w	11.5w
24v Cool White LED Strip 3m (IP65) Dimensions: 8mm x 3000mm	3000mm	Cool White	6000K	1330lm/m	ALEDRIB-H-6000-3.0-24	9.6w	28.8w
24v Cool White LED Strip 4m (IP65) Dimensions: 8mm x 4000mm	4000mm	Cool White	6000K	1330lm/m	ALEDRIB-H-6000-4.0-24	9.6w	38.4w
24v Cool White LED Strip 5m (IP65) Dimensions: 8mm x 5000mm	5000mm	Cool White	6000K	1330lm/m	ALEDRIB-H-6000-5.0-24	9.6w	48.0w
24v Warm White LED Strip 1.2m (IP65) Dimensions: 8mm x 1200mm	1200mm	Warm White	3000K	1260lm/m	ALEDRIB-H-3000-1.2-24	9.6w	11.5w
24v Warm White LED Strip 3m (IP65) Dimensions: 8mm x 3000mm	3000mm	Warm White	3000K	1260lm/m	ALEDRIB-H-3000-3.0-24	9.6w	28.8w
24v Warm White LED Strip 4m (IP65) Dimensions: 8mm x 4000mm	4000mm	Warm White	3000K	1260lm/m	ALEDRIB-H-3000-4.0-24	9.6w	38.4w
24v Warm White LED Strip 5m (IP65) Dimensions: 8mm x 5000mm	5000mm	Warm White	3000K	1260lm/m	ALEDRIB-H-3000-5.0-24	9.6w	48.0w
Note: Make sure you purchase the correct power supply for the LED strip you choose							

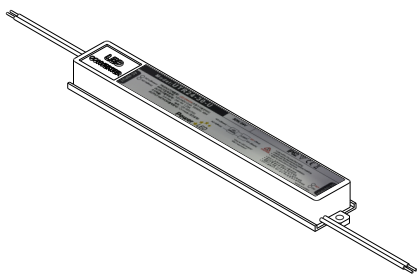


EXTRUDED ALUMINIUM SIGNAGE SYSTEM

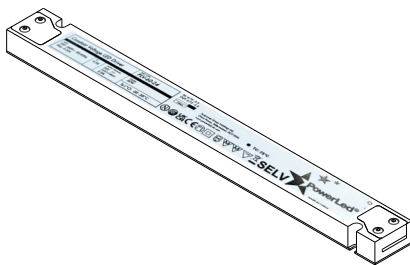
www.ashbytrade.net
+44 (0) 118 981 5343

Tools required to
cut / uncoat / connect the wiring
of the power supply and LED Strips.





24v Power Supply 30 Watt
ALEDP5030 WP24



24v Power Supply 60 Watt
ALEDP5060 WP24

PRODUCT	CODE	IP RATING	WATTS	AMPS INPUT
24v Water Resistant Power Supply 30 Watt Dimensions: 180mm x 30mm x 19mm	ALEDP5030 WP24	IP62	30w	0.6A
24v Water Resistant Power Supply 60 Watt Dimensions: 300mm x 30mm x 17mm	ALEDP5060 WP24	IP20	60w	0.32A
Note: Please check the wattage required on the LED Strip you are using before selecting your Power Supply				

IP RATING CHART

Ingress Protection Rating

SAMPLE IP RATING: **SOLID 6** **LIQUID 6**

FIRST DIGIT: SOLIDS		
LEVEL	OBJECT SIZE PROTECTED AGAINST	EFFECTIVE AGAINST
X	Protection Unspecified (Untested)	Protection Unspecified (Untested)
0	Not Protected	No protection against contact and ingress of objects.
1	>50mm	Any large surface of the body, such as the back of the hand, but no protection against deliberate contact with a body part.
2	>12.5mm	Fingers or Similar objects.
3	>2.5mm	Tools, thick wires, etc.
4	>1mm	Most wires, screws, etc.
5	Dust Protected	Ingress of dust is not entirely prevented, but it must not enter in sufficient quantity to interfere with the satisfactory operation of the equipment, complete protection against contact.
6	Dust Tight	No ingress of dust; complete protection against contact
The first digit indicates the level of protection that the enclosure provides against access to hazardous parts (e.g electrical conductors, moving parts) and the ingress of solid foreign objects.		

SECOND DIGIT: LIQUIDS		
LEVEL	OBJECT SIZE PROTECTED AGAINST	EFFECTIVE AGAINST
X	Protection Unspecified (Untested)	Protection Unspecified (Untested)
0	Not Protected	Not protected
1	Dripping water	Dripping water (vertical falling drops) shall have no effect.
2	Dripping water when tilted up to 15°	Vertical dripping water shall have no harmful effect when the enclosure is tilted at an angle up to 15° from its normal position.
3	Spraying water	Water falling as a spray at any angle up to 60° from the vertical shall have no harmful effect.
4	Splashing water	Water splashing against the enclosure from any direction shall have no harmful effect.
5	Water jets	Water projected by a nozzle (6.3mm) against enclosure from any direction shall have no harmful effects.
6	Powerful water jets	Water projected in powerful jets (12.5mm nozzle) against the enclosure from any direction shall have no harmful effects.
7	Immersion up to 1m	Ingress of water in harmful quantity shall not be possible when the enclosure is immersed in water under defined conditions of pressure and time (up to 1m of submersion).
8	Immersion beyond 1m	The equipment is suitable for continuous immersion in water under conditions which shall be specified by the manufacturer. Normally, this will mean that the equipment is hermetically sealed. However, with certain types of equipment, it can mean that water can enter but only in such a manner that it produces no harmful effects.
The second digit indicates the protection of the equipment inside the enclosure against harmful ingress of water.		

Stryder is IP66 Certified

SOLIDS

WATER

6X

X6

Full protection against dust and other similar particles

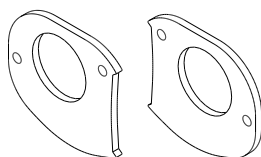
Protection against powerful jets of water at a rate of 100 litres per minute (100kPa of Pressure)

EXTRUDED ALUMINIUM SIGNAGE SYSTEM

www.ashbytrade.net
+44 (0) 118 981 5343

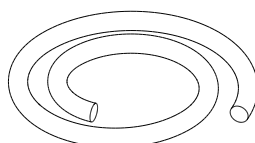
Tools required to cut / uncoat / connect the wiring of the power supply and LED Strips.





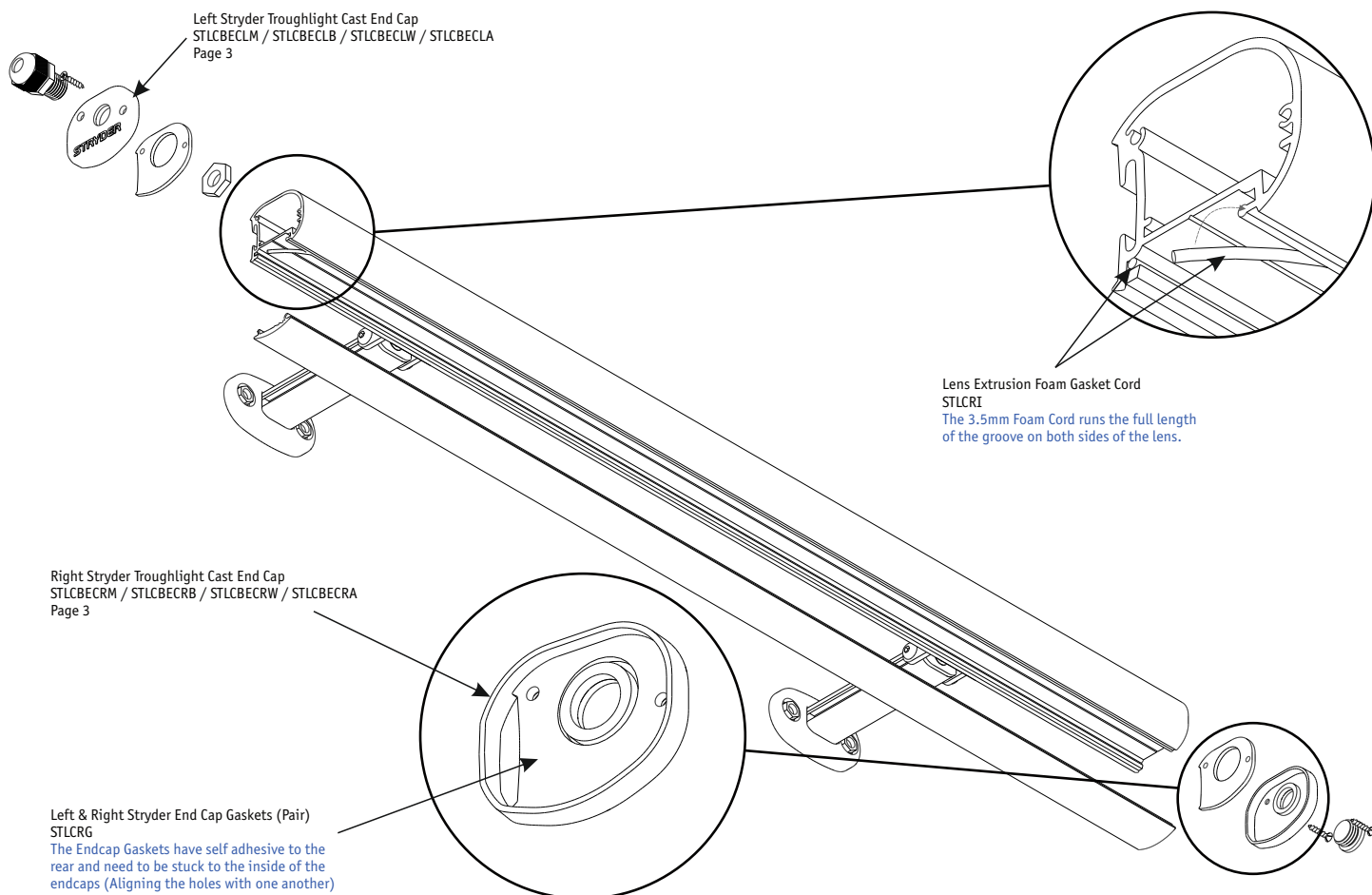
Left & Right Stryder End Cap Gaskets (Pair)
STLCRG

PRODUCT	CODE	MATERIAL	FINISH
Stryder End Cap Gaskets Adhesive Backed (Pair) Dimensions: 45mm x 42mm x 3mm	STLCRG	EPDM SPONGE RUBBER FOAM	Black
Used on:	Stryder Troughlight Cast End Caps (Left & Right) STLCBEC*M / STLCBEC*B / STLCBEC*W / STLCBEC*A (Page 3)		

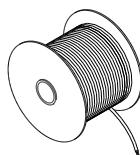


Lens Extrusion Foam Gasket Cord
STLCRI

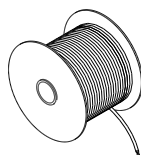
PRODUCT	CODE	MATERIAL	FINISH
Lens Extrusion Foam Gasket Cord Dimensions: 3.5mm Diameter	STLCRI	NEOPRENE SPONGE	Black
Used on:	Stryder Troughlight Extrusion STLCM*.0 / STLCB*.0 / STLCW*.0 / STLCEA*.0 (Page 3)		
Note:	You will require two runs of Foam cord at the length of the troughlight		



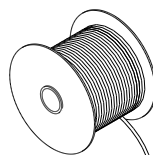
EXTRUDED ALUMINIUM SIGNAGE SYSTEM



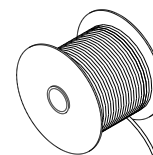
10m/100m 2-Core Cable (Black)
EAC2CB10 / EAC2CB100



10m/100m 2-Core Cable (White)
EAC2CW10 / EAC2CW100

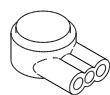


10m/100m 3-Core Cable (Black) for 240V
EAC3CB10 / EAC3CB100

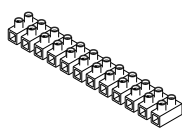


10m/100m 3-Core Cable (White) for 240V
EAC3CW10 / EAC3CW100

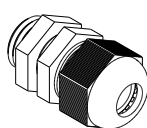
PRODUCT	CODE	LENGTH
2-Core Cable (Black)	EAC2CB10	10m
2-Core Cable (White)	EAC2CW10	10m
2-Core Cable (Black)	EAC2CB100	100m
2-Core Cable (White)	EAC2CW100	100m
3-core Cable (Black)	EAC3CB10	10m
3-core Cable (White)	EAC3CW10	10m
3-core Cable (Black)	EAC3CB100	100m
3-core Cable (White)	EAC3CW100	100m
3-core Cable is for use with the Power Supply (between Mains and Power Supply).		



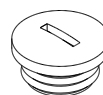
Gel Connectors
EAIDC
(To join 2 12v cables together ONLY)



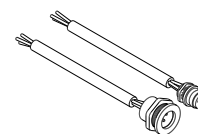
Block Connectors
EACB
(To join 240v cables together)



Large Cable Gland (Black/Grey)
EACBPB/EACBPG
(Screws into the cable exiting endcap to seal 3-core cable coming out of Troughlight)



Blanking Plug (Black/Grey)
EACBPB/EACBPG
(Seals the Endcap that doesn't have a cable exiting)



Snap-In Joining Connectors
STLCSIEC
(For Joining Multiple trough lights together)
Male & Female Connectors fix into Joining Endcaps

PRODUCT	CODE	MATERIAL	FINISH
Gel Connector Dimensions: 17mm x 12mm x 8mm	EAIDC	POLYCARBONATE	Clear/Red
Block Connectors Dimensions: 140mm x 24mm x 16mm	EACB	PVC	White
Large Cable Gland (Black) Dimensions: 35mm x 22mm	EACBPB	NYLON	Black
Large Cable Gland (Grey) Dimensions: 35mm x 22mm	EACBPG	NYLON	White
Blanking Plug (Black) Dimensions: 20mm x 9mm	EACBPB	NYLON	Black
Blanking Plug (Grey) Dimensions: 20mm x 9mm	EACBPG	NYLON	White
IP68 Snap-In Joining Connectors (24v/240v) 3-core cable length: 2x 200mm	STLCSIEC	N/A	Black



Troughlight Cap Screw
ACS4x9.5S / ACS4x9.5B



5.5x25mm Counter Sunk Screw
ACS5.5x25



M6 12mm Dome Head Bolt
M6DOME12



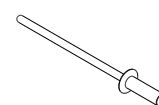
M6 Square Nut
M6NUTS



M6 Washer (External Tooth)
M6WASHEXT



M6 8mm Grub Screw
GSM0608

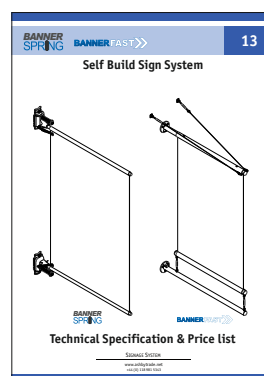
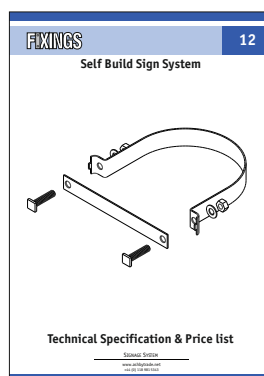
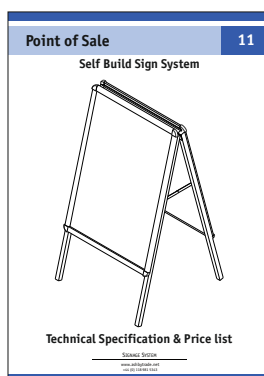
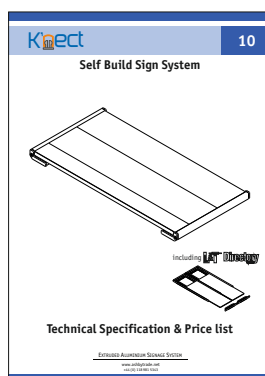
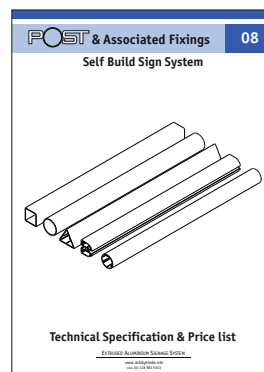
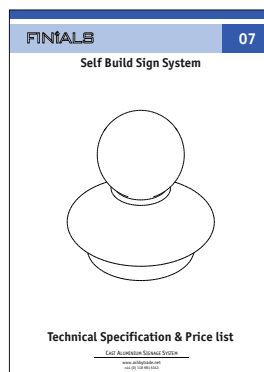
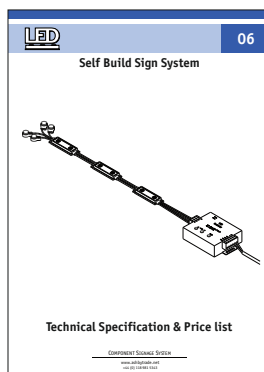
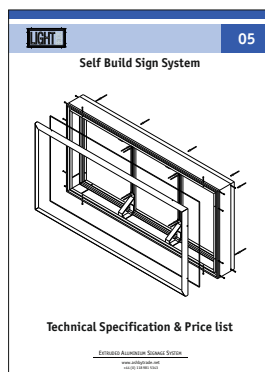
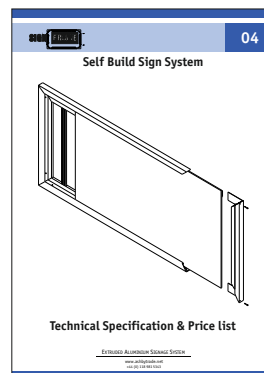
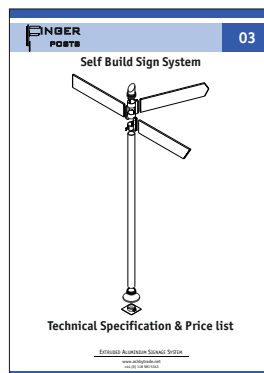
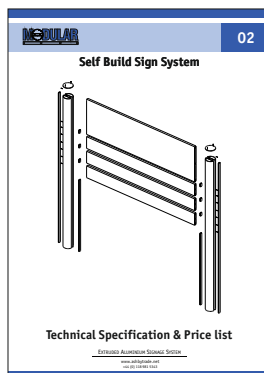
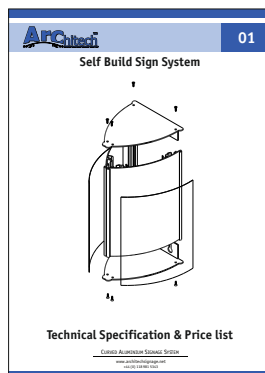


Pop Rivet (Small)
PTRS

PRODUCT	CODE	MATERIAL	FINISH
Troughlight Cap Screw (Silver)	ACS4x9.5S	STAINLESS STEEL	Silver
Troughlight Cap Screw (Black)	ACS4x9.5B	STAINLESS STEEL	Black
5.5x25mm Counter Sunk Screw	ACS5.5x25	STAINLESS STEEL	Silver
M6 12mm Dome Head Bolt	M6DOME12	STAINLESS STEEL	Silver
M6 Square Nut	M6NUTS	STAINLESS STEEL	Silver
M6 Washer (External Tooth)	M6WASHEXT	STAINLESS STEEL	Silver
M6 8mm Grub Screw	GSM0608	STAINLESS STEEL	Silver
3.1x10mm Aluminium Pop Rivet (Small)	PTRS	ALUMINIUM	Silver

EXTRUDED ALUMINIUM SIGNAGE SYSTEM

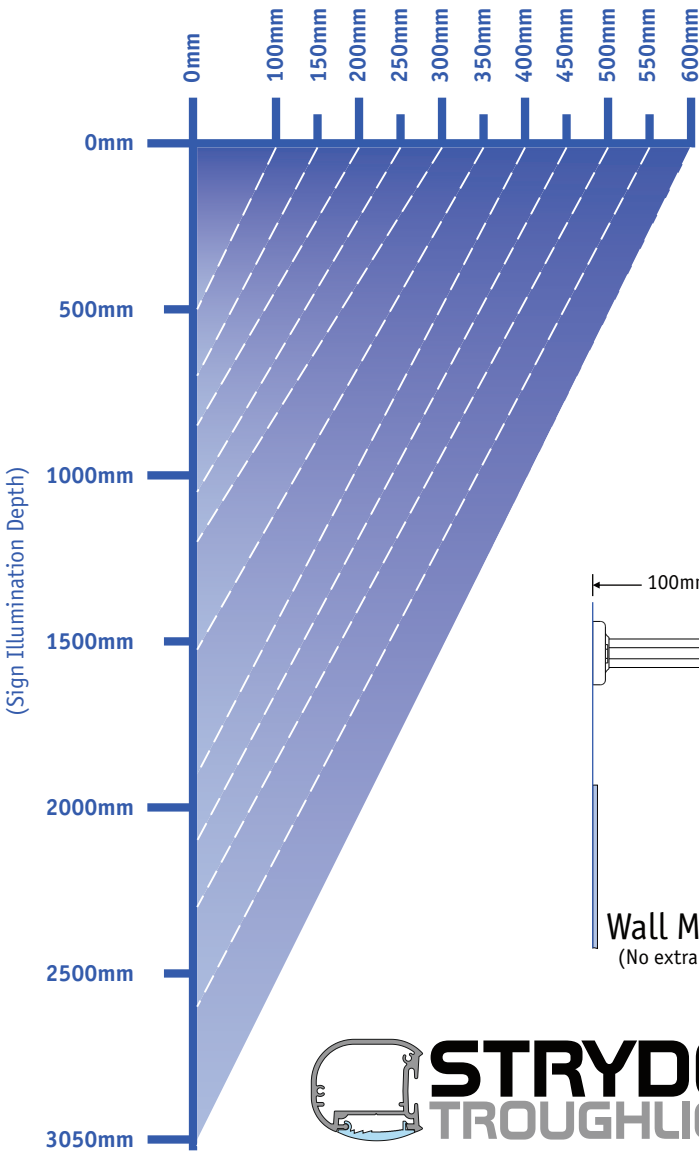
www.ashbytrade.net
+44 (0) 118 981 5343



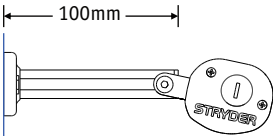
Optimum Illumination Chart

(Length of bracket from face of sign)

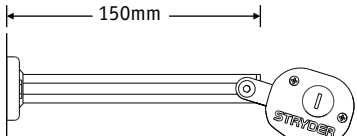
(if you are using a tray add the return depth to the bracket length)



Wall Bracket Length Example



Wall Mounted Panel
(No extra Extrusion is required)



Wall Mounted Tray
(50mm added for return on tray)



Please note: These light measurements were taken using our Cool White LED (6000K) and may differ using Warm White LED (3000K)



Ashby Trade Sign Supplies Ltd
Hatch Industrial Park
Basingstoke
RG24 7NG

Tel: 0118 981 5343
sales@ashbytrade.co.uk
www.ashbytrade.net

Registered in England No. 1439528 Registered Office: As Above